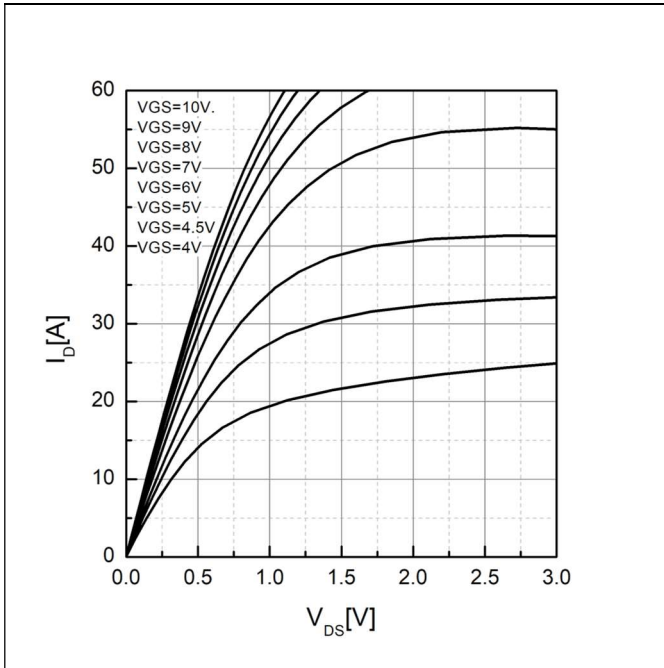
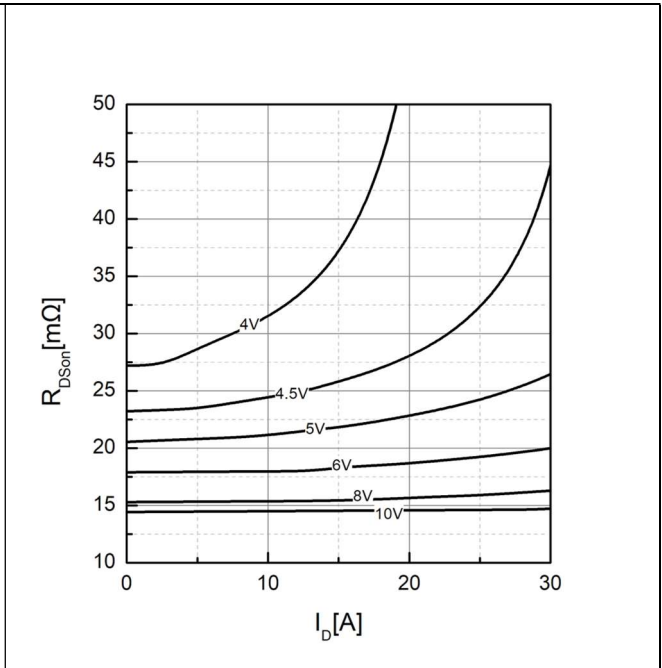
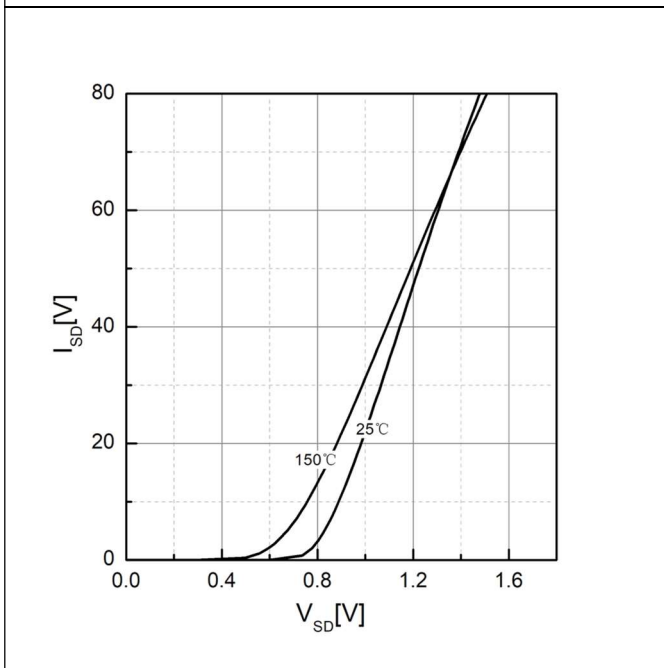
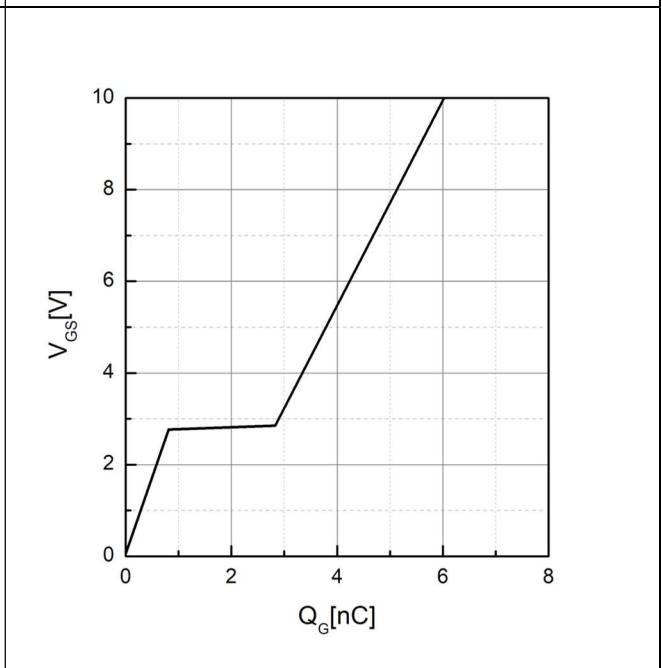


**Typical Performance Characteristics**

**Figure 1. Output Characteristics,  $T_J=25^\circ\text{C}$** 

**Figure 2. Drain-source on resistance,  $T_J=25^\circ\text{C}$** 

**Figure 3. Forward characteristics of body diode**

**Figure 4. Gate Charge Characteristics**

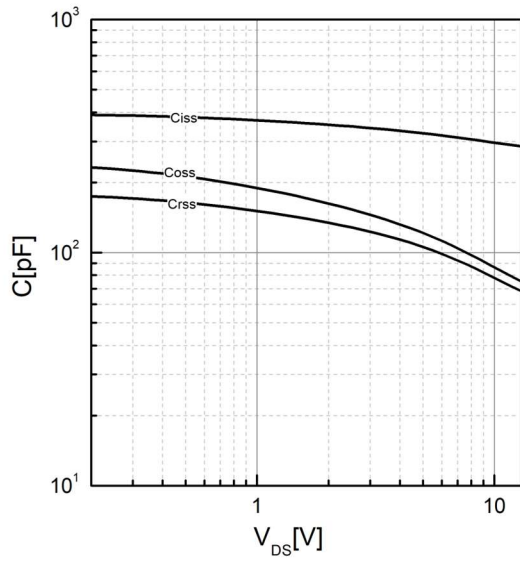


Figure 5. Capacitance Characteristics

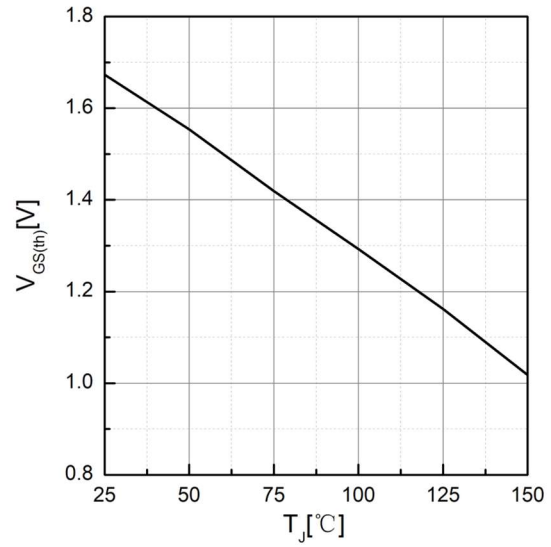


Figure 6. Threshold Voltage Vs. Temperature

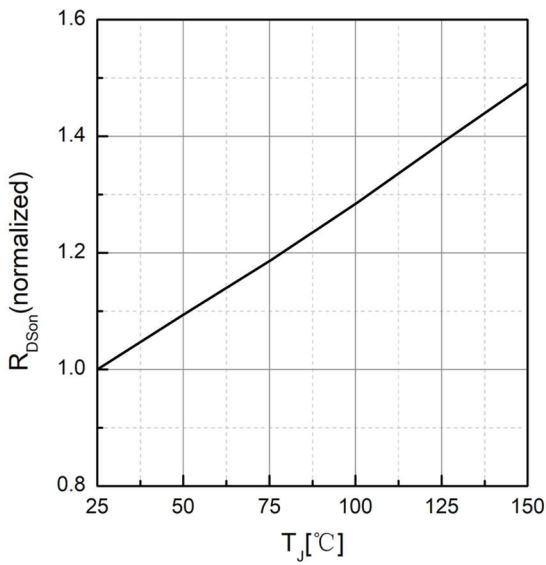


Figure 7. Drain-source on-state resistance

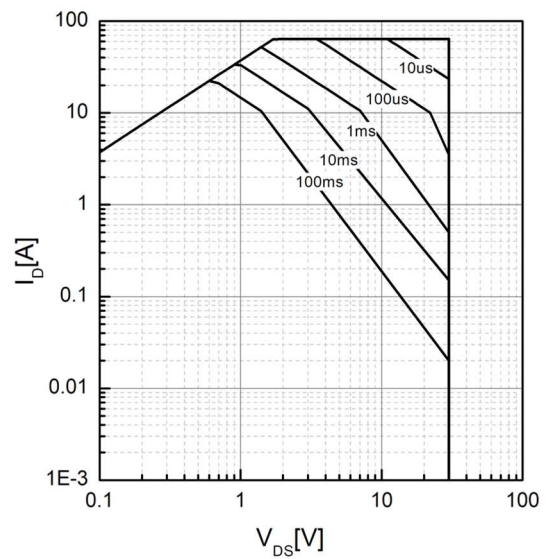


Figure 8. Maximum Safe Operating Area

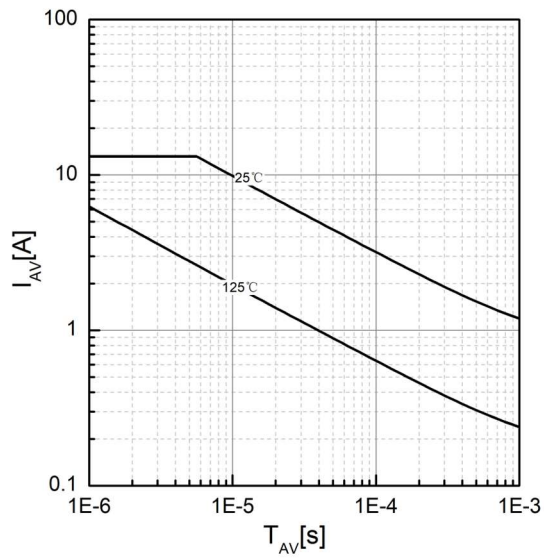


Figure 9. Avalanche characteristics

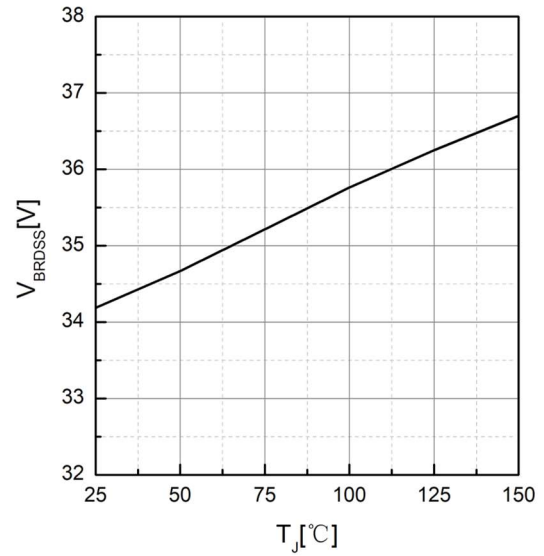


Figure 10. Drain-source breakdown voltage

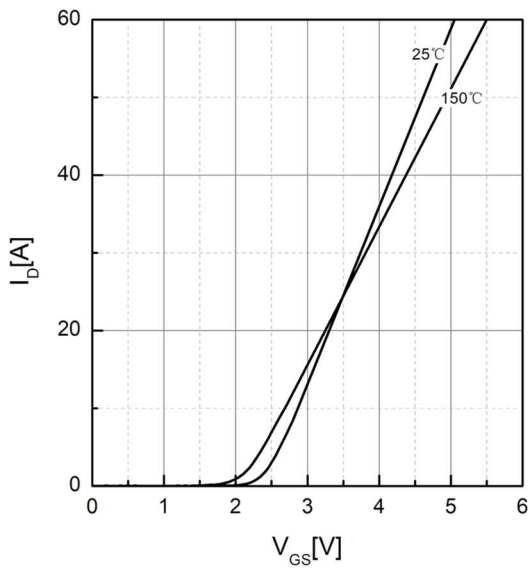


Figure 11. Transfer characteristics

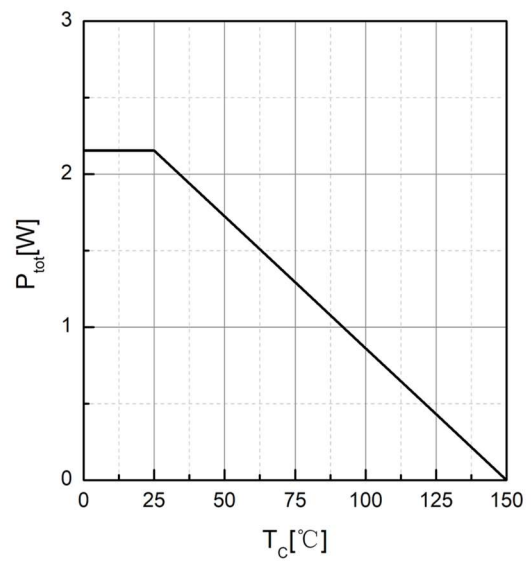


Figure 12. Power dissipation

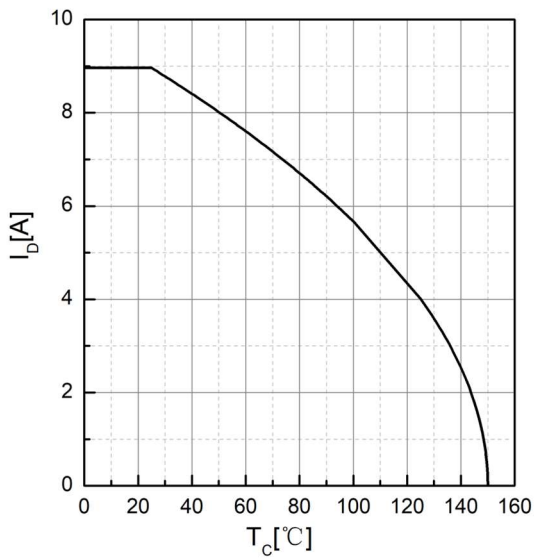


Figure 13. Drain current

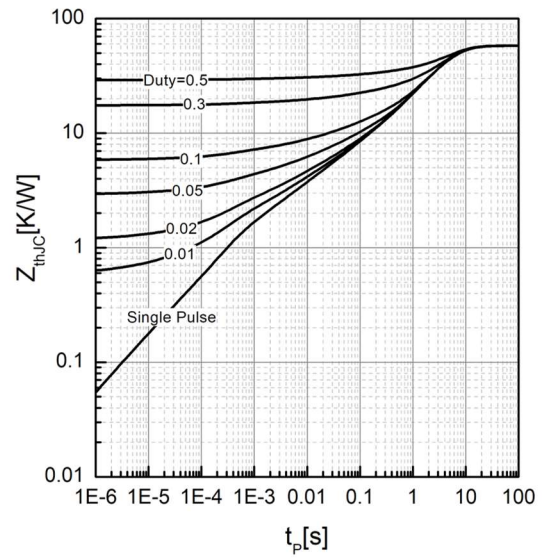


Figure 14. Effective Transient Thermal Impedance

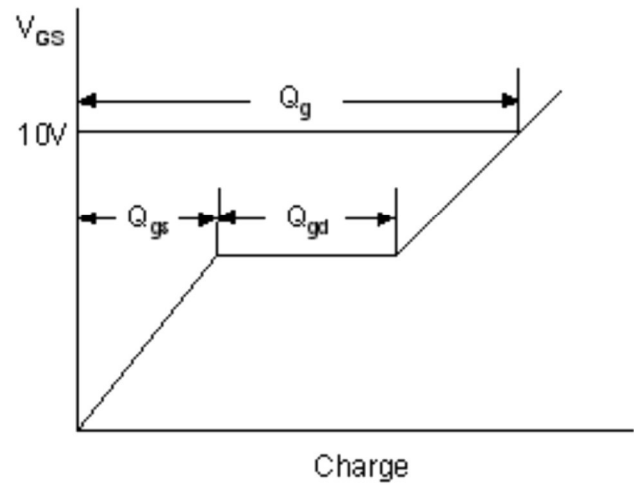
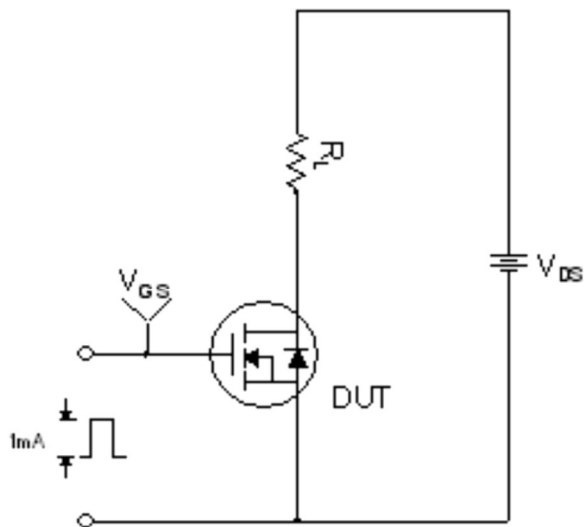


Figure 15. Gate Charge Test Circuit & Waveform

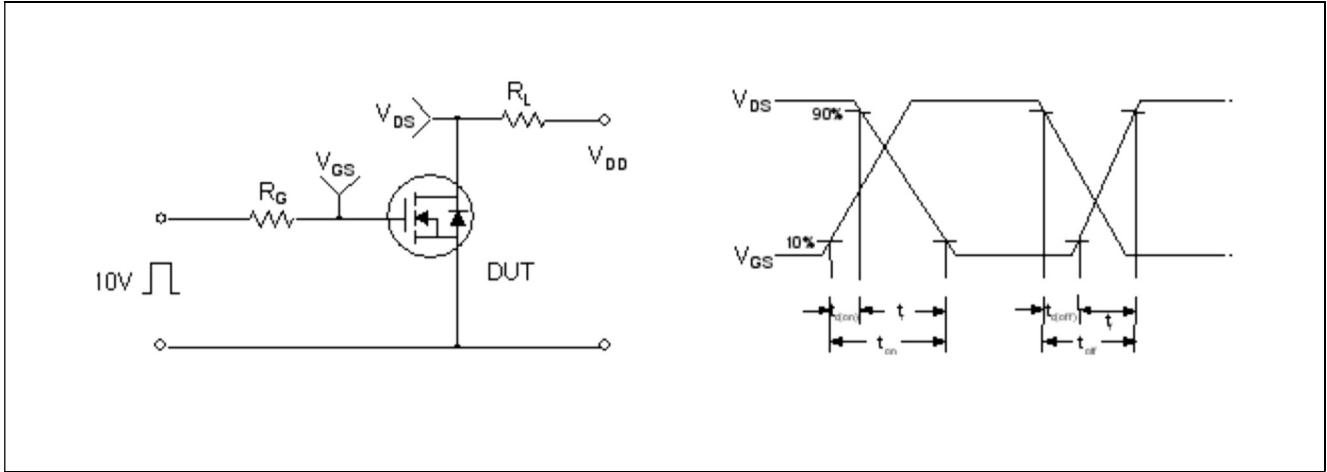


Figure 16. Resistive Switching Test Circuit & Waveforms

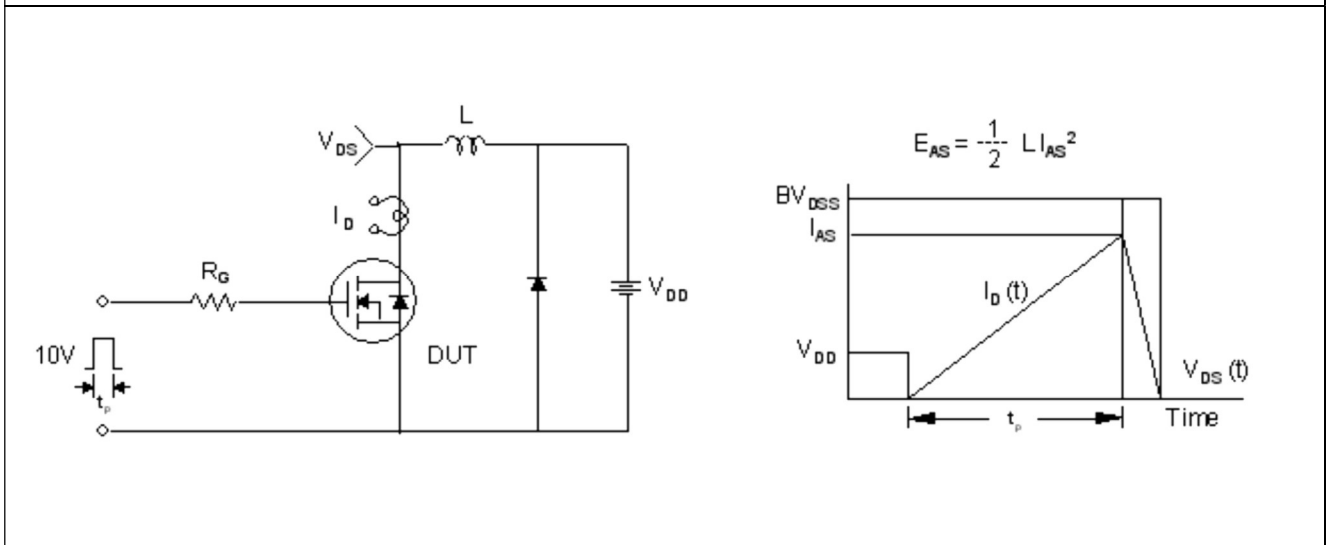
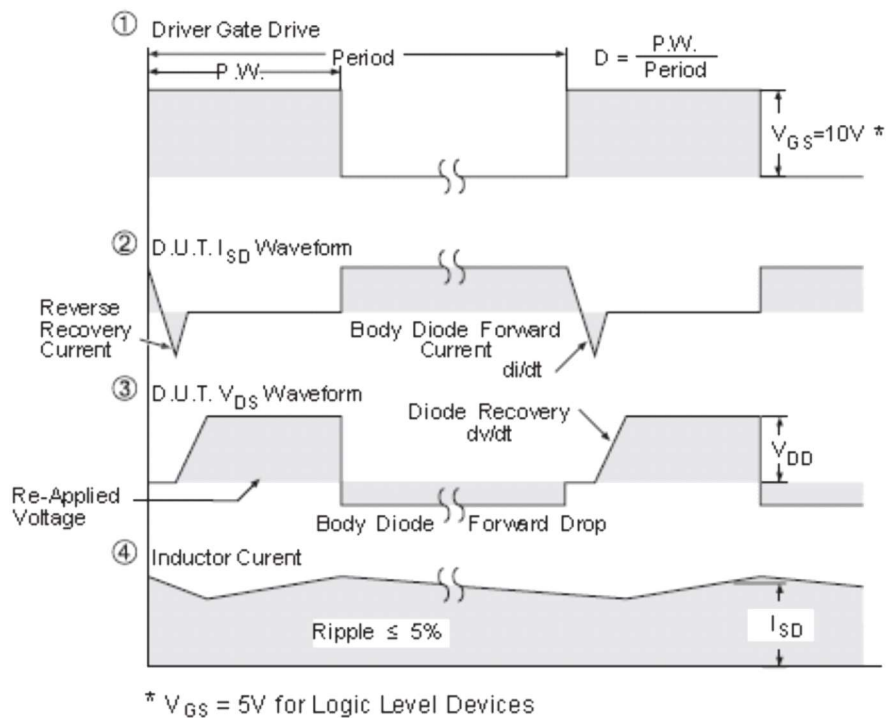
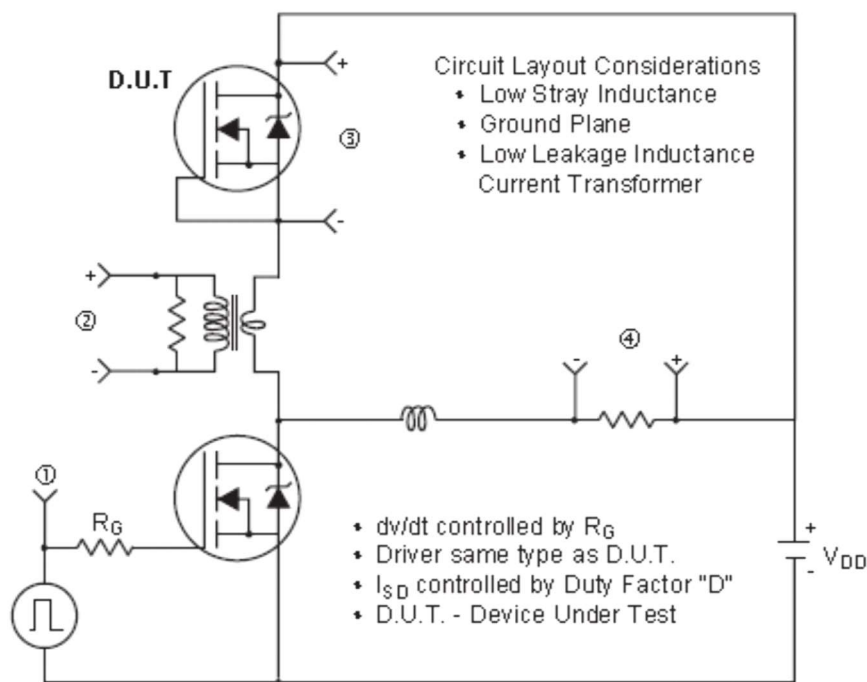
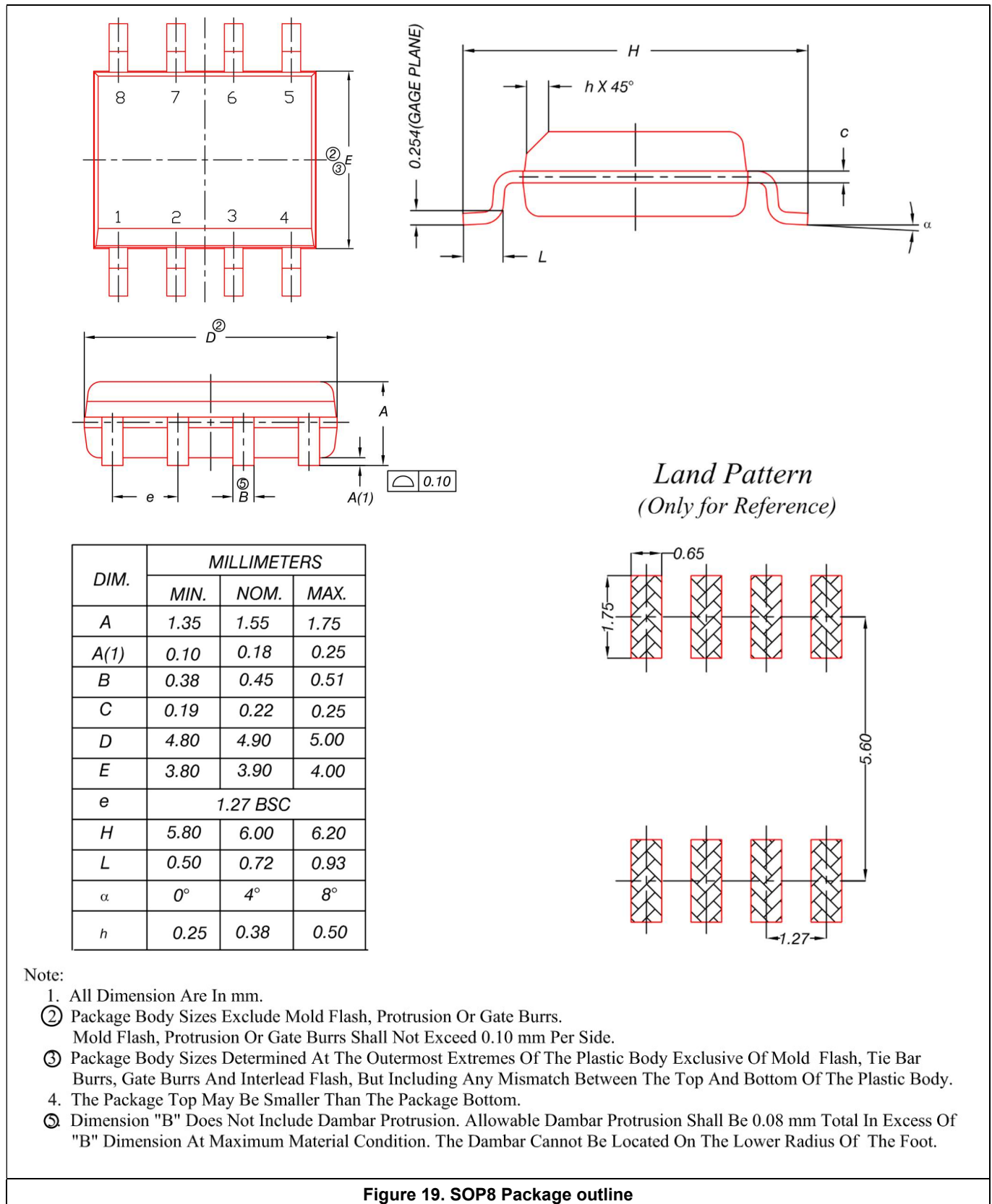


Figure 17. Unclamped Inductive Switching Test Circuit & Waveforms



**Figure 18. Peak Diode Recovery dv/dt Test Circuit & Waveforms (For N-channel)**

**Package outline**

**Figure 19. SOP8 Package outline**

**Disclaimer:**

JUNSHINE does not give any representations or warranties, expressed or implied, as to the accuracy or completeness of such information and shall have no liability for the consequences of use of such information.

JUNSHINE reserves the right to make changes to information published in this document, including without limitation specifications and product descriptions, at any time and without notice. This document supersedes and replaces all information supplied prior to the publication hereof.

JUNSHINE makes no warranty, representation or guarantee regarding the suitability of the products for any particular purpose or the continuing production of any product. To the maximum extent permitted by applicable law, JUNSHINE disclaims (1) any and all liability arising out of the application or use of any product, (2) any and all liability, including without limitation special, consequential or incidental damages, and (3) any and all implied warranties, including warranties of fitness for particular purpose, non-infringement and merchantability.

JUNSHINE products, except as expressly indicated in writing, are not designed for use in medical, life-saving, or life-sustaining applications, or for any other application in which the failure of the JUNSHINE product could result in personal injury or death. Customers using or selling JUNSHINE products not expressly indicated for use in such applications do so at their own risks.

Resale of JUNSHINE products with statements different from or beyond the parameters stated by JUNSHINE for that product or service voids all express or implied warranties for the associated JUNSHINE product or service and is unfair and deceptive business practice. JUNSHINE is not responsible or liable for any such statements.

No license, express or implied, by estoppel or otherwise, to any intellectual property rights is granted by this document or by any conduct of JUNSHINE. Product names and markings noted herein may be trademarks of their respective owners.

JUNSHINE IS A FULLY OWNED SUBSIDIARY OF Wuxi XICHANWEIXIN Semiconductor Co., Ltd.